

LDI-520-FP-20

520 nm, FP, 20 mW CW

DESCRIPTION

The module is equipped with an SM fiber and provides a Gaussian beam with a field diameter 4.0 μm at the fiber output and optical power up to 20 mW in CW. It has a compact size and low power consumption.

Application: biomedical systems.

ABSOLUTE MAXIMUM RATINGS

Parameter	Value	Unit
LD forward current, I_{ff}	200	mA
LD reverse voltage, V_{r1}	2	V
Operating temperature, T_c	-20 ÷ +60	°C
Storage temperature, T_{stg}	-40 ÷ +85	°C

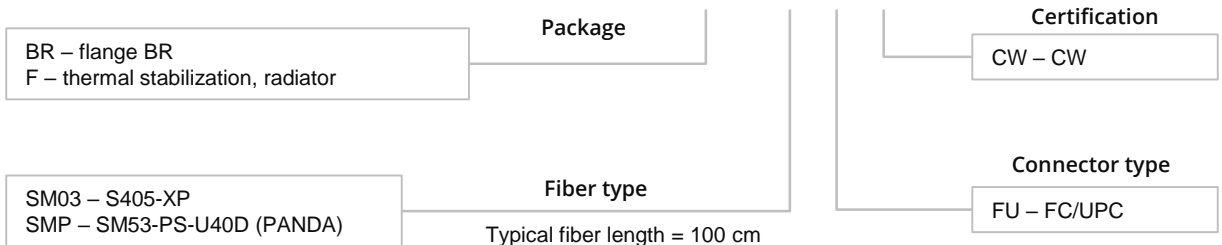
ELECTRICAL-OPTICAL CHARACTERISTICS (SINGLE MODE, T = 25 °C)

Parameter	Min	Typ	Max	Unit	Test conditions	
Wavelength	λ	520	525	530	nm	CW, P=20 mW
Threshold current	I_{th}		35	75	mA	CW
Operating current	I_{op}		45		mA	CW, P=5 mW
			100	150		CW, P=20 mW
Spectral width	$\Delta\lambda$		2		nm	CW, P=20 mW, FWHM
Operating voltage	V_{op}		6.5	8	V	CW, P=20 mW
Slope efficiency	S_e		0.30		mW/mA	CW, P=20 mW
Monitoring output current (PD)	I_m		0.2	0.3	mA	CW, P = 20 mW, $V_{rd} = 5\text{ V}$

The provided values hold true at ambient temperature 25 °C providing heat removal from the module case.

ORDERING INFORMATION

LDI-520-FP-20-X-3-X-X-X

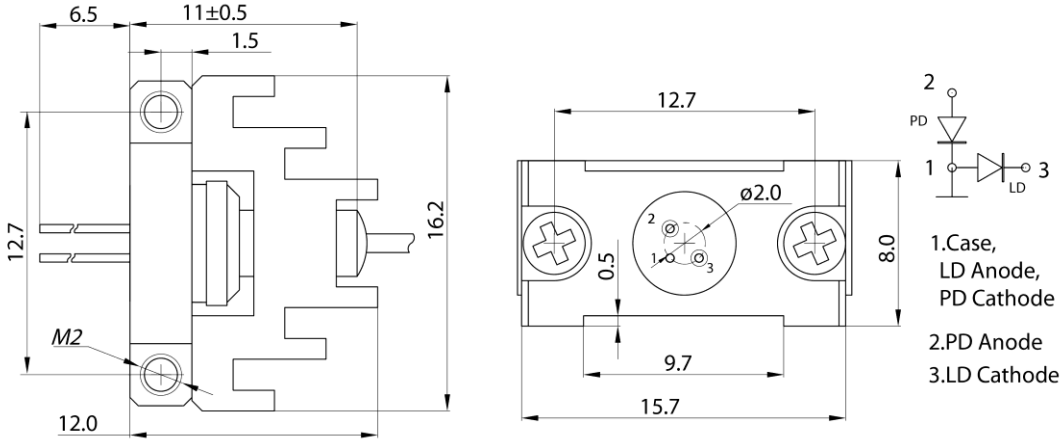


Our products are certified by Belarusian Chamber of Commerce. All the components used in production are ISO 9001:2008 certified and comply with RoHS directive. Characteristics, data, materials and structures specified in this datasheet are subject to change without notice.

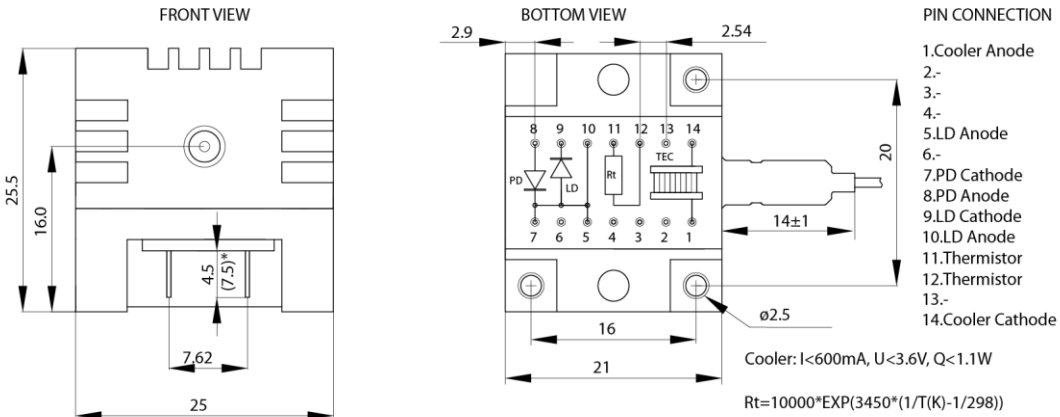
This document was updated on 31.08.2017

LDI-520-FP-20

BR

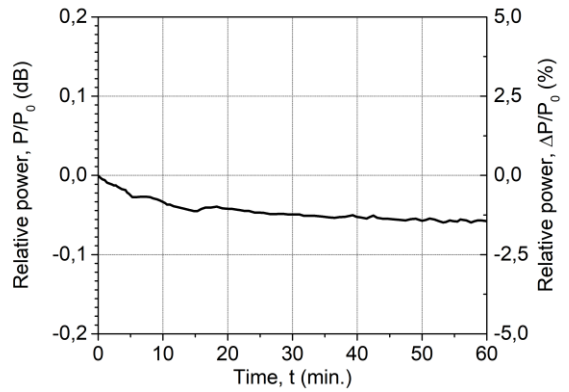
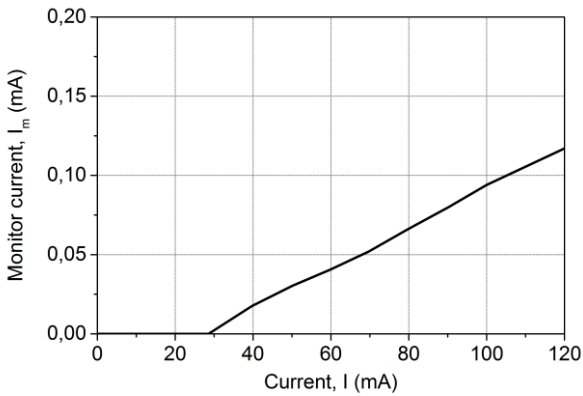
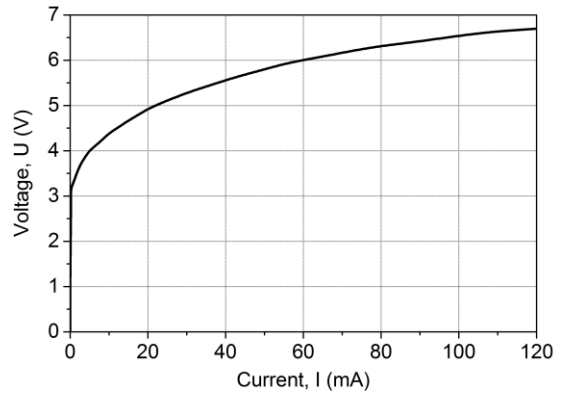
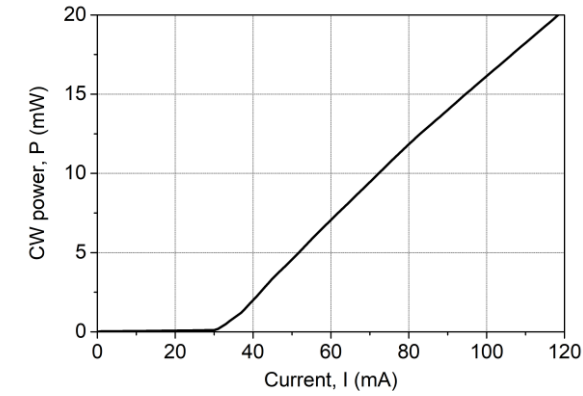


F

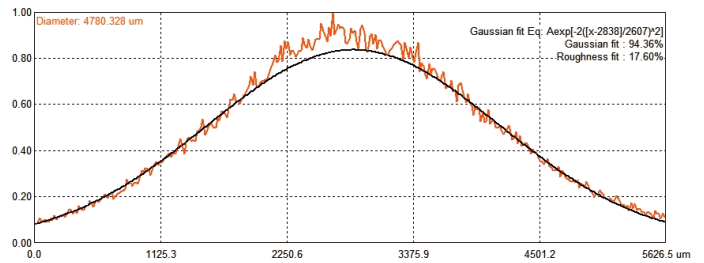
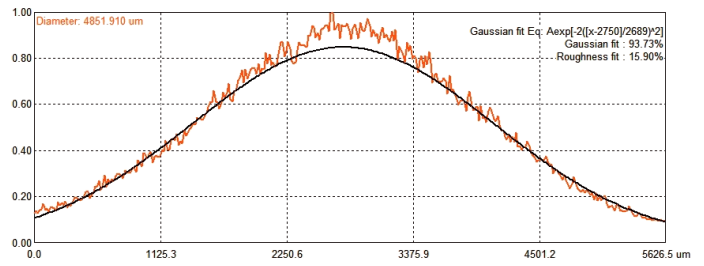
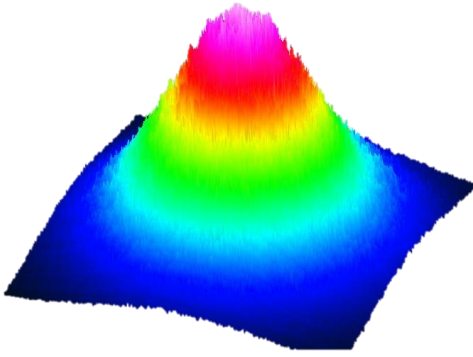


*Possible pins length 4.5 mm or 7.5 mm.

LDI-520-FP-20



LDI-520-FP-20



The beam profile is close to Gaussian. Measurements were done with the beam profiling camera Beamage-4M (Gintec-EO).