

PDI-35-10G-W

PIN photodiode module, 1000-1650 nm, 10 GHz, 10 mW

DESCRIPTION

This detector module works in the spectral range 1000 - 1650 nm at frequencies up to 10 GHz and an optical power up to 10 mW. It is equipped with an SM fiber. Small size and weight allow for installing it on a PCB without additional mounting.

PDI-35-10G-W-RM is the module with optical matching. The space between a fiber and PD is filled with an index-matched medium. PDI-35-10G-W-R40 provides low back reflection (<-40 dB).

Applications: high-speed optical communication systems.

ABSOLUTE MAXIMUM RATINGS

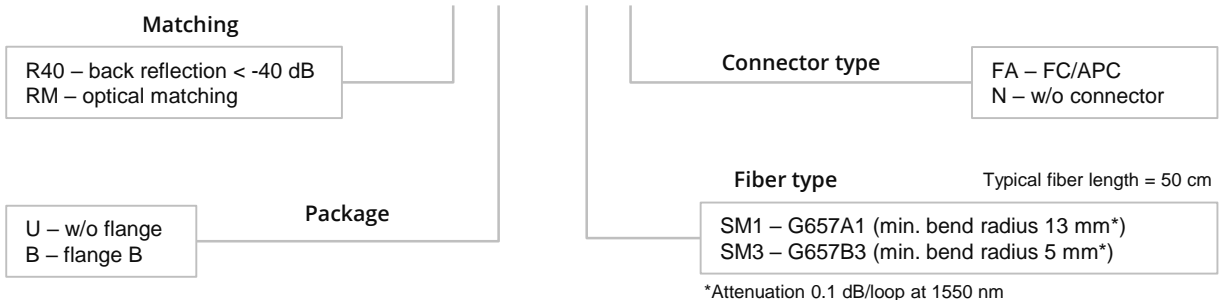
Parameter	Value	Unit
PD reverse voltage, V_r	5.5	V
PD forward current, I_f	30	mA
Operating temperature, T_c	-40 ÷ +80	°C
Storage temperature, T_{stg}	-40 ÷ +85	°C
Optical power, P	10	mW

ELECTRICAL-OPTICAL CHARACTERISTICS (SINGLE MODE, T = 25 °C)

Parameter		Min	Typ	Max	Unit	Test conditions
Responsivity	PDI-35-10G-W-R40	0.9	0.95		A/W	$\lambda = 1550 \text{ nm}, V_R = 5 \text{ V}$
	PDI-35-10G-W-RM	0.95	1.0			
Operating voltage	V_{op}		5		V	
Back reflection	R_L		-45	-40	dB	$\lambda = 1550 \text{ nm}$
Dark current	I_d		1	1.5	nA	$V_R = 5 \text{ V}$
Capacitance	C_t		0.25	0.3	pF	$V_R = 5 \text{ V}, f = 1 \text{ MHz}$
Cut-off frequency	f_c		10	12	GHz	$\lambda = 1550 \text{ nm}, V_R = 5 \text{ V}, R_L = 50 \Omega, -3 \text{ dB}$

ORDERING INFORMATION

PDI-35-10G-W-X-X-5-X-X

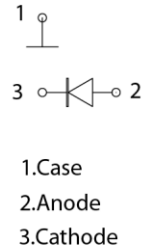
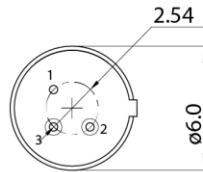
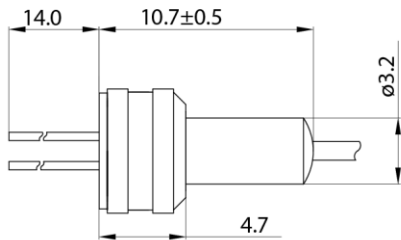


Our products are certified by Belarusian Chamber of Commerce. All the components used in production are ISO 9001:2008 certified and comply with RoHS directive. Characteristics, data, materials and structures specified in this datasheet are subject to change without notice.

This document was updated on 31.08.2017

PDI-35-10G-W

U



B

